

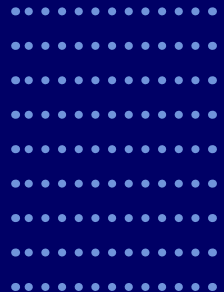


LICHEN SCLEROSUS

ISSVD PRACTICAL GUIDE TO DIAGNOSIS AND MANAGEMENT

Tania Day | Melissa Mauskar | Amanda Selk

September 2024



ISBN: 978-989-53489-8-5

Legal deposit: 537099/24

DOI:

Property

ISSVD

www.issvd.org

Edition & Pagination

Ad Médic, Lda.

www.admedic.pt

Authors	13
Preface	17
CHAPTER 01 Pathogenesis and epidemiology	18
Defining lichen sclerosis	18
Multifactorial pathogenesis	18
Rate estimates and age and gender distribution	19
Race and ethnicity	20
Association of lichen sclerosis with medical conditions	21
Lichen sclerosis and risk of neoplasia	22
Limitations of the literature	23
Conclusions and recommendations	23
CHAPTER 02 Symptoms	29
Asymptomatic lichen sclerosis	29
Range of symptoms	29
Limitations of the literature	31
Conclusions and recommendations	31
CHAPTER 03 Examination	34
Approach to examination	34
Vulvar findings	36
Role of colposcopy, dermoscopy, and photography	41
Assessment of severity and outcomes of treatment	42
Vulvar self-examination	42
Limitations of the literature	42
Conclusions and recommendations	43

CHAPTER 04 Histopathology	46
Clinician's approach to vulvar biopsy	46
Biopsy technique	47
Histopathology of lichen sclerosis	50
Variation in histopathologic manifestations of LS	52
Limitations of the literature	56
Conclusions and recommendations	56
CHAPTER 05 Differential diagnosis and comorbid vulvar conditions	60
Physiologic changes	60
Dermatologic conditions with architecture change	60
Dermatologic conditions that do not cause architecture change	61
Vulvar pigmented lesions	63
Infectious conditions and lichen sclerosis	64
Vaginitides	67
Psychosexual conditions	67
Neoplasia	68
Conclusions and recommendations	68
CHAPTER 06 Treatment with topical corticosteroids	74
Goals of treatment and assessment of treatment outcome	74
Primer on use of topical corticosteroids	75
Data supporting topical steroids as the mainstay of lichen sclerosis treatment	78
Initial treatment	78
Maintenance therapy	79
Adverse effects of topical steroids	80
Limited indication for cessation of topical steroids	82
Maximizing adherence and managing steroid phobia	82
Surveillance	84
Limitations of the literature	85
Conclusions and recommendations	86
CHAPTER 07 General and vulvovaginal health	91
Diet and exercise	91
Cleansing and avoidance of contact irritants and allergens	92
Toileting and bowel health	92

Clothing and undergarments	93
Hair management	93
Emollients and barrier creams	93
Vaginal and menstrual care	94
Resources for patients, social media, and support groups	96
Conclusions and recommendations	97
CHAPTER 08 Psychosexual concerns and pelvic floor health	100
Sexual impacts	100
Sex therapy, cognitive behavioral therapy, and mindfulness-based therapy	101
Comorbid depression and anxiety	102
Psychologic and interpersonal factors	103
Pelvic health physiotherapy	103
Limitations of the literature	106
Conclusions and recommendations	106
CHAPTER 09 Assessment and management of non-response to topical corticosteroids	111
Revisiting the original diagnosis	112
Categories of non-response to topical steroids	113
Generalized abnormal skin – Reasons and management	114
Focally abnormal skin – Reasons and management	117
Well controlled lichen sclerosus with persistent symptoms – Reasons and management	118
Limitations of the literature	119
Conclusions and recommendations	119
CHAPTER 10 Proposed alternatives to treatment with topical corticosteroids	123
Topical agents	123
Systemic medications	125
Medical devices and procedures	128
Limitations of the literature	131
Conclusions and recommendations	131
CHAPTER 11 Neoplasia arising in lichen sclerosus	135
Etiology of squamous neoplasia in lichen sclerosus	135
Prevention strategies for vulvar squamous neoplasia	136

Diagnosis of squamous neoplasia	138
Treatment and surveillance of neoplasia in lichen sclerosis	146
Limitations of the literature	150
Conclusions and recommendations	151
CHAPTER 12 Surgery for complications of lichen sclerosis	157
Psychosexual and musculoskeletal considerations and non-surgical management strategies	158
Preoperative considerations	158
Surgical interventions	159
Post-operative care and complications	161
Limitations of the literature	162
Conclusions and recommendations	162
CHAPTER 13 Lichen sclerosis in childhood and adolescence	166
Differences to adults in symptoms	166
Differences to adults in vulvar examination	166
Role of biopsy	168
What happens in adolescence?	169
Differences to adults in comorbid medical and dermatologic conditions	170
Treatment strategies specific to pediatric lichen sclerosis	170
Alternatives to topical steroids in children	172
Vulvar care advice specific to children	173
Long-term sequelae of undertreated pediatric lichen sclerosis	173
Limitations of the literature	174
Conclusions and recommendations	174
CHAPTER 14 Lichen sclerosis during pregnancy, postpartum, and breastfeeding	178
Lichen sclerosis during pregnancy and birth	178
Lichen sclerosis in the postpartum period	180
Lichen sclerosis during breastfeeding and estrogen supplementation	181
Limitations of the literature	182
Conclusions and recommendations	182
CHAPTER 15 Lichen sclerosis and advancing age	184
Menopause and lichen sclerosis	184
Impact of incontinence and pelvic organ prolapse on lichen sclerosis	188

Treatment considerations for lichen sclerosus with comorbidities of advancing age	190
Limitations of the literature	191
Conclusions and recommendations	192
CHAPTER 16 Future directions	196
Investigating pathogenesis to identify preventative and therapeutic targets	196
Establishing diagnostic criteria and a clinical severity scale	198
Demanding longer-term outcome data and higher quality interventional trials	198
Advocacy, education, and implementation challenges	199
Limitations of the literature	200
Conclusions and recommendations	201
APPENDIX 1 Glossary of anatomic, dermatologic, and dermatopathologic terminology	205
Vulvar anatomy	205
Dermatologic terminology	206
Dermatopathologic terminology	208

CHAPTER 03 Examination	34
Figure 1 Focal white color change at site of adherence between right labium minus and interlabial sulcus	36
Figure 2 Focal white color change at inferior inner labia minora, posterior fourchette, and perineum	36
Figure 3 Diffuse white color change over hairless and hair bearing skin from anterior commissure to perineum	36
Figure 4 Diffuse white color change over vulva, buttock, and genitocrural folds	36
Figure 5 White-pink color change and crinkly texture over inferior labia majora, perineum, and perianus	37
Figure 6 White color change and thickened texture over periclitoral structures with a vertical fissure at anterior commissure	37
Figure 7 Moderately well-demarcated circumferential erythema with edema of periclitoral structures in the setting of candida superinfection of lichen sclerosus (LS)	37
Figure 8 Thickened skin with increased skin markings and grey-pink discoloration over inferior labia majora, consistent with lichen simplex chronicus (LSC) comorbid with LS	38
Figure 9 Areas of lichenification, evidence of excoriation, and hyperkeratosis adjacent to an erosion on inner right labium minus on a background of white color change in untreated LS	38
Figure 10 Anterior architectural change with partial clitoral phimosis and total resorption of labia minora	39
Figure 11 Clitoral phimosis with clitoral pseudocyst in the setting of candidal superinfection of LS	39
Figure 12 Well-demarcated depigmented skin at outer labia majora and buttock consistent with vitiligo abutting an internal demarcation of pallor and erythema over labia majora, labia minora, perineum, and perianus consistent with LS; there are areas of near-normal pigmentation within the erythematous area	40

Figure 13	Dermoscopic findings of LS: homogeneous whitish background with white-yellowish comedo-like openings corresponding to dilated infundibula with follicular cornified plugging	41
Figure 14	Dermoscopic findings of LS: typical whitish patchy structureless areas and scattered white-yellowish comedo-like openings	41
Figure 15	Dermoscopic findings of LS: white scales at the clitoris hood with adjacent whitish patches	41
CHAPTER 04 	Histopathology	46
Figure 1a	Classic histopathologic appearance of LS – thinned epithelium, dermal sclerosis, and a band-like lymphocytic infiltrate; H&E x100	51
Figure 1b	Basal layer degeneration seen as vacuolar change and squamatization and edematous and hyalinized collagen change; H&E x200	51
Figure 2	LS with superimposed LSC: hyperkeratosis, hypergranulosis, acanthosis with irregular rete ridges, sclerosis, vertical papillary fibrosis, and a lymphocytic infiltrate; H&E x100	52
Figure 3	LS with superimposed LSC: marked hyperkeratosis, hypergranulosis, flat acanthosis, sclerosis, and a lymphocytic infiltrate; H&E x200	52
Figure 4	Erosive LS: loss of upper epithelium with intraepithelial neutrophils, regenerative basal layer change, edematous sclerosis, and lymphocytic infiltrate; H&E x200	53
Figure 5	Lichenoid dermatitis: thinned epithelium, basal layer degeneration, and a closely-applied band-like lymphocytic infiltrate; H&E x200	53
Figure 6	Hypertrophic lichenoid dermatitis: hyperkeratosis and parakeratosis, hypogranulosis, regular acanthosis, basal layer degeneration at tops of papillary processes, and a lymphocytic infiltrate; H&E x100	53
Figure 7a	LS with mycosis: erosion with subcorneal neutrophils, acanthosis with irregular rete ridges, sclerosis, and lymphocytic infiltrate; H&E x100	55
Figure 7b	LS with mycosis: fungal elements and neutrophils in the stratum corneum; PAS x400	55
CHAPTER 06 	Treatment with topical corticosteroids	74
Figure 1	One fingertip length, or 0.5g of steroid ointment. This is far more than required to cover vulvar skin.	77
Figure 2	A quarter of a fingertip unit, or a lentil-sized amount, covers hairless skin and non-keratinized squamous epithelium of the periclitoral structures, labia minora, and vestibule.	77
Figure 3	A third of a fingertip unit, or a pea-sized amount, covers hair bearing skin of labia majora, perineum, and perianus.	77

Figure 4	Signs of steroid overuse in LS: poorly-demarcated erythema, telangiectasia, and multiple large epidermal cysts	81
CHAPTER 09	 Assessment and management of non-response to topical corticosteroids	111
Figure 1	An algorithmic approach to non-response to topical steroids	111
CHAPTER 10	 Proposed alternatives to treatment with topical corticosteroids	123
Figure 1	Severe vulvar LS exposed to fractional CO2 laser with the grid-dot pattern still visible	130
CHAPTER 11	 Neoplasia arising in lichen sclerosus	135
Figure 1	HPV-independent (HPV-I) VIN in a field of LS with irregular red patches and white plaques on inner left labium minus and interlabial sulcus	138
Figure 2	HSIL and HPV-associated SCC in a field of LS	139
Figure 3a	Classic HPV-I VIN with thick parakeratosis, premature maturation, irregular acanthosis, acantholysis, nuclear atypia, and minimal dermal sclerosis; H&E x100	140
Figure 3b	Classic HPV-I VIN with basal overexpressed p53 pattern; x100	140
Figure 4a	Basaloid HPV-I VIN with mild flat acanthosis, minimal maturation between basal layer and surface, and nuclear atypia; H&E x200	141
Figure 4b	Basaloid HPV-I VIN with full-thickness p53 overexpression highlighting enlarged and pleomorphic nuclei; x200	141
Figure 5a	Keratinizing HSIL in LS: hyperkeratosis and parakeratosis, acanthosis with reduced rete ridges, maturation between basal layer and surface, atypical nuclei, sclerosis, and lymphocytic infiltrate; H&E x100	141
Figure 5b	Keratinizing HSIL in LS with block-positive p16, x100	141
Figure 6	Unusual acanthotic lesion in LS: thick white plaques with an irregular surface at the clitoral hood and superior labia minora	144
Figure 7a	Unusual acanthotic lesion in LS: thick hyperkeratosis, irregular acanthosis, altered maturation, and dermal fibrosis; H&E x100	144
Figure 7b	Unusual acanthotic lesion in LS: slightly enlarged vesicular nuclei of similar size and occasional mitotic figures; H&E x200	144
Figure 7c	Unusual acanthotic lesion in LS: p53 staining more than expected for wild-type but insufficient to qualify as overexpression; x200	144
Figure 8a	Subtle HPV-I VIN: thinned epithelium, normal maturation, minimal basal atypia, and sclerosis; H&E x200	147
Figure 8b	Subtle HPV-I VIN: aberrant negative p53; x200	147
Figure 9	Radiation changes in LS with induration and telangiectasia	149

Figure 1 Prepubertal child with LS: white color change, edema, and abnormal texture ranging from crinkly to hyperkeratotic 167

Figure 2 Pubertal child with architectural change due to LS: white color change over periclitoral structures and interlabial sulci, midline fusion of labia minora with clitoral phimosis 168

Figure 3 Adolescent with architectural change due to LS: near normal color and texture with labial resorption and flattened prepuce 168

Figure 4 Adolescent with LS and superimposed LSC: grey-pink color change and edema over prepuce, interlabial sulci, inner labia minora, and perineum, increased skin markings at labia majora, and thickened white color change at the anterior commissure and posterior fourchette 170

Figure 5 Perianal telangiectasia in a prepubertal child with LS 172

Tania Day

Gynecology, John Hunter Hospital and University of Newcastle, Newcastle, New South Wales, Australia

Melissa Mauskar

Dermatology, University of Texas Southwestern, Dallas, Texas, United States of America

Amanda Selk

Gynecology, Women's College Hospital and Mount Sinai Hospital, University of Toronto, Toronto, Ontario, Canada

AUTHORS (alphabetical order)

Olushola Akinshemoyin Vaughn

Dermatology, Medical College of Wisconsin, Milwaukee, Wisconsin, United States of America

Veronica Boero

Gynecology, Foundation IRCCS Ca' Granda Ospedale Maggiore Policlinico, Milan, Italy

Alessandro Borghi

Dermatology, University of Ferrara, Ferrara, Italy

Katrina Bouchard

Psychology, Department of Obstetrics & Gynecology, University of British Columbia, Vancouver, Canada

Jennifer Bradford

Gynecology, Sydney Adventist Hospital, Sydney, New South Wales, Australia

Matthé Burger

Gynecology, Academic Medical Center, Amsterdam, The Netherlands

Carlotta Caia

Gynecology, Foundation IRCCS Ca' Granda Ospedale Maggiore Policlinico, Milan, Italy

Monica Corazza

Dermatology, University of Ferrara, Ferrara, Italy

Claire Danby

Gynecology, Maine Medical Center and Tufts University School of Medicine, Portland, Maine, United States of America

Shatavisha Dasgupta

Anatomical pathology, Broad Institute of MIT and Harvard, Boston, Massachusetts, United States of America

Emily Delpero

Gynecology, University of Ottawa, Ottawa, Ontario, Canada

Lois Eva

Gynecologic oncology, Auckland City Hospital and University of Auckland, Auckland, New Zealand

Ekene Ezenwa

Dermatology, Northwestern University, Chicago, Illinois, United States of America

Deana Funaro

Dermatology, Université de Montréal, Montréal, Canada

Andrew Goldstein

Gynecology, Center for Vulvovaginal Disorders, Washington DC, United States of America

Švitrigailė Grincevičienė

Gynecology, Vilnius University, Life Sciences Centre, Institute of Biotechnology, Vilnius, Lithuania

Pia Halonen

Gynecology, Helsinki University Central Hospital, Helsinki, Finland

Anna Jaeger

Gynecologic oncology, University Medical Center Hamburg-Eppendorf and Jerusalem Hospital, Hamburg, Germany

Carson Judkins

Pelvic health physiotherapy, New York, New York, United States of America

Carly Kirshen

Dermatology, The Ottawa Hospital and University of Ottawa, Ottawa, Ontario, Canada

Gudula Kirtschig

Dermatology, Medical Health Centre Frauenfeld, Frauenfeld, Switzerland

Christina Kraus

Dermatology, University of California Irvine, Irvine, California, United States of America

Jill Krapf

Gynecology, Center for Vulvovaginal Disorders, Tampa, Florida, United States of America

Jaclyn Lanthier

Patient advocate and founder of The Lost Labia Chronicles, Toronto, Ontario, Canada

Alicia Little

Dermatology, Yale University, New Haven, Connecticut, United States of America

Nina Madnani

Dermatology, PD Hinduja National Hospital and Medical Research Centre, Mumbai, India

Kalyani Marathe

Pediatric dermatology, Cincinnati Children's Hospital, Cincinnati, Ohio, United States of America

Claudia Marchitelli

Gynecology, Hospital Italiano de Buenos Aires, Buenos Aires, Argentina

Laura Melnik

Dermatology, Weill Cornell Medical College, New York, New York, United States of America

Leia Mitchell

Physician assistant, Center for Vulvovaginal Disorders, New York, New York, United States of America

Beth Morrel

Gynecology, Erasmus University Medical Center, Rotterdam, The Netherlands

Emily Murphy

Dermatology, George Washington University, Washington DC, United States of America

Michelle Murphy

Dermatology, University College Cork, Cork, Ireland

Elisabeth Quint

Gynecology, Boston Children's Hospital and Harvard Medical School, Boston, Massachusetts, United States of America

Sonali Patel

Pelvic health physiotherapy, New York, New York, United States of America

Elisa Pesce

Gynecology, Foundation IRCCS Ca' Granda Ospedale Maggiore Policlinico, Milan, Italy

Miriam Keltz Pomeranz

Dermatology, New York University Grossman School of Medicine, New York, New York, United States of America

Mario Preti

Gynecology, Medical Oncology, University of Torino, Torino, Italy

Sophie Rees

Social science, University of Bristol, Bristol, United Kingdom

Sydney Rivera Dixon

Dermatology, University of Texas, Southwestern, Dallas, Texas, United States of America

Natalie Saunders

Gynecology, University of Michigan, Ann Arbor, Michigan, United States of America

Rebecca B Saunderson

Dermatology, Royal North Shore Hospital and University of Sydney, Sydney, New South Wales, Australia

James Scurry

Anatomical pathology, New South Wales Health Pathology North John Hunter Hospital and University of Newcastle, Newcastle, New South Wales, Australia

Rosalind Simpson

Dermatology, University of Nottingham, Nottingham, United Kingdom

Amy Stein

Pelvic health physiotherapy, New York, New York, United States of America

Amy Stenson

Gynecology, Oregon Health and Science University, Portland, Oregon, United States of America

Dolly Taiwò

Dermatology, Kaiser Permanente, Atlanta, Georgia, United States of America

Irene van der Avoort

Gynecology, Ikazia Ziekenhuis, Rotterdam, The Netherlands

Pedro Vieira-Baptista

Gynecology, Hospital Lusíadas Porto and Faculdade de Medicina da Universidade do Porto, Porto, Portugal

Julieta Vera

Gynecology, Hospital Italiano de Buenos Aires, Buenos Aires, Argentina

Hans Verstraelen

Gynecology, Ghent University Hospital and Ghent University, Ghent, Belgium

Emma Veysey

Dermatology, Royal Women's Hospital, Melbourne, Victoria, Australia

Annarosa Virgili

Dermatology, University of Ferrara, Ferrara, Italy

Linn Woelber

Gynecologic oncology, University Medical Center Hamburg-Eppendorf and Jerusalem Hospital, Hamburg, Germany

This book is dedicated to everyone affected by vulvar lichen sclerosus (LS). Our aim is to provide comprehensive education and support to all who navigate this condition, emphasizing the importance of inclusive and respectful healthcare. Throughout the book we have referred to women and girls, reflecting that most people affected by vulvar LS identify as female and this informs both our clinical experience and the scientific literature. We also recognize people with LS who identify as male or non-binary and acknowledge the challenges of their LS journey.

We wish to extend our deepest gratitude to the numerous authors and collaborators from around the globe who contributed countless hours of their expertise to this book. Your dedication and hard work have been instrumental in creating this open access resource. A special thanks goes to the International Society for the Study of Vulvovaginal Disease (ISSVD) for their unwavering support and commitment to advancing education and research in this field. For all those living with vulvar LS: your experiences and resilience inspire us every day. We hope this book will serve as a vital tool in educating healthcare providers worldwide, ultimately leading to improved patient care and better outcomes for all affected by this condition.

With sincere thanks and hopes for a brighter future,

Tania Day
Melissa Mauskar
Amanda Selk

